

THE

OREGON SURVEYOR

Vol. 37, No. 6, 2014



A publication of the Professional Land Surveyors of Oregon

PLSO CONFERENCE 2015
JANUARY 21-23, 2015
SALEM CONVENTION CENTER

TRAVERSE ←
TO THE **FUTURE**
PLSO → **2015**

2014 PLSO Board & Committee Chairs

CHAIR **LEE SPURGEON**

503-656-4915 | lee@townshipsurveys.com

CHAIR-ELECT **JOHN THATCHER**

jthatch1@ch2m.com

EXECUTIVE SECRETARY **AIMEE McAULIFFE**

503-303-1472 | execdirector@plso.org
www.linkedin.com/in/amcauliffe

PLSO OFFICE

PO Box 230548

Tigard, OR 97281

PHONE 503-303-1472

TOLL FREE 844-284-5496

FAX 503-303-1472

EMAIL office@plso.org

WEB www.plso.org

COMMITTEE CHAIRS

ARCHIVES

Roger Galles, finditsol@aol.com

AWARDS

John Thatcher, jthatch1@ch2m.com

BYLAWS/CONSTITUTION

Brent Bacon, brent.bacon@eweb.org

CONFERENCE

Jered McGrath
mcgrathjered@hotmail.com

EDUCATIONAL GOALS & ACTIONS (EGAC)

Joe Ferguson, joe@flspx.com

FINANCIALS

Gary Johnston, garyjohn@wildblue.net

GEOCACHE

Ryan Godsey, rgodsey@cesnw.com
Dan Linscheid, linschd@co.yamhill.or.us

GPS USERS GROUP

Dave Wellman
dave@wellmansurveying.com

HISTORIAN

Paul Galli, paulgalli75@yahoo.com

LEGISLATIVE

Carl Sweeden
cslandsurveying@douglasfast.net

MEMBERSHIP

Gary Anderson
ganderson@westlakeconsultants.com

NSPS, OREGON GOVERNOR

Bob Neathamer, bob@neathamer.com

OACES LIAISON

Scott Freshwaters
sfreshwaters@chamberscable.com

THE OREGON SURVEYOR

Greg Crites, gac@deainc.com

PROFESSIONAL PRACTICES

Bob Neathamer, bob@neathamer.com

SCHOLARSHIP

Ben Stacey, bstacy001@hotmail.com

STRATEGIC PLAN

Gary Johnston, garyjohn@wildblue.net

TRIG-STAR

Joe Ferguson, joe@flspx.com

TWIST

Tim Kent, taktent@comcast.net

WESTFED

John Thatcher, jthatch1@ch2m.com

CHAPTER OFFICERS

Central 1	PRESIDENT	Erik Huffman	ehuffman@beconeng.com
	PRESIDENT-ELECT	Kevin Samuel	kevin_r_samuel@yahoo.com
	SECRETARY/TREASURER	Kevin Samuel	kevin_r_samuel@yahoo.com
Mid-west 2	PRESIDENT	Brent Bacon	brent.bacon@eweb.org
	PRESIDENT-ELECT	Dan Nelson	dann@branchengineering.com
	SECRETARY/TREASURER	John Oakes	oakes@poage.net
Pioneer 3	PRESIDENT	Chuck Wiley	charleswiley@gmail.com
	PRESIDENT-ELECT	James Greenman	jimg@hrs-engrs.com
	SECRETARY/TREASURER	Al Hertel	info@chsurvey6150.com
Rogue River 4	PRESIDENT	Jason Martin	jason@tothepointls.com
	PRESIDENT-ELECT	Herb Farber	herb@farbersurveying.com
	SECRETARY/TREASURER	John Voorheis	johnvoorheis@grantspass.com
South Central 5	PRESIDENT	Mitch Duryea	mitch@duryea-associates.com
	PRESIDENT-ELECT	TBA	
	SECRETARY/TREASURER	Orlando Aquino	orlando.aquino@oit.net
Southwest 6	PRESIDENT	Greg Solarz	koos@charter.net
	PRESIDENT-ELECT	TBA	
	SECRETARY/TREASURER	Joe Mannix	jmannix@blm.gov
Umpqua 7	PRESIDENT	Brent Knapp	brent.knapp@umpqua.edu
	PRESIDENT-ELECT	Kris DeGroot	kris.degroot@btsengineering.com
	SECRETARY/TREASURER	Daniel Saily	dan.saily@lrtc.com
Willamette 8	PRESIDENT	Chris Glantz	cagl@deainc.com
	PRESIDENT-ELECT	Colter Hessel	colterh@msn.com
	SECRETARY/TREASURER	Brenda James	bj@pdgroupllc.com
Blue Mountain 9	PRESIDENT	Jason Wells	jason@wellssurveying.com
	PRESIDENT-ELECT	Lee Myers	leemyers@oregontrail.net
	SECRETARY/TREASURER	Steve Haddock	witnesstree@eoni.net

AFFILIATED WITH



WFPS

facebook

Join us on Facebook: [Professional Land Surveyors of Oregon](#)

Linked in

Join the PLSO group: www.linkedin.com

twitter

Follow us at: www.twitter.com/ORLandSurveyors



THE OREGON SURVEYOR

Vol. 37, No. 6, 2014

Professional Land Surveyors of Oregon

Executive Secretary

Aimee McAuliffe
PO Box 230548
Tigard, OR 97281
503-303-1472
Toll-free: 844-284-5496
execdirector@plso.org
www.plso.org

Publications Committee

Greg Crites, PLS, *Editor*
gac@deainc.com
Paul Galli • paulg@hhpr.com
Chuck Wiley • charleswiley@gmail.com

Published by

LLM Publications, Inc.
8201 SE 17th Ave
Portland, OR 97202
503-445-2220 • 800-647-1511
www.AssociationPublications.com

President

Linda L. Pope, linda@llm.com

Advertising

Dan Hartzog, danh@llm.com

Design

Lisa J. Switalla, lisa@llm.com

LLM
PUBLICATIONS

Where Publishing Comes To Life

© 2014 LLM Publications, Inc.

Contents

Editor's Note, by <i>Greg Crites, PLS</i>	2
From the PLSO Lobbyist, by <i>Darrell W. Fuller</i>	3
View from the PLSO office, by <i>Aimee McAuliffe</i>	5
PLSO Conference 2015: Traverse to the Future	6–11
Join us in 2015!, by <i>Jered McGrath, PLS</i>	7
Speakers and Seminars, by <i>Jered McGrath, PLS</i>	8
Recognize our members!, by <i>Aimee McAuliffe</i>	9
PLSO Education and Outreach Auction, by <i>Gary Johnston, PLS</i>	10
Annual Map Contest	11
Cadastral tales, by <i>Bob Taylor, PLS</i>	12
#14 Toxicodendron #15 Yuma	
Lost Surveyor, by <i>Pat Gaylord, PLS</i>	15
Oregon historian needs your help, by <i>Paul Galli, PLS</i>	16
Oregon student ranked 8th by National Trig-Star Committee	17
Surveying & Geomatics at Oregon Tech— Wilsonville, by <i>Timothy A. Kent, PLS</i>	18
Clark College Surveying & Geomatics Program, by <i>Timothy A. Kent, PLS</i>	19
Professional Listings	20

On the Cover, Photo by Patrick Gaylord

This small ranch and hunting cabin is nestled in the Ochoco Mountains near the south fork of the John Day River in Grant County.

The Oregon Surveyor is a publication of the Professional Land Surveyors of Oregon (PLSO). It is provided as a medium for the expression of individual opinions concerning topics relating to the Land Surveying profession.

Address changes & business All notifications for changes of address, membership inquiries and PLSO business correspondence should be directed to Aimee McAuliffe, PO Box 230548, Tigard, OR 97281; 503-303-1472; execdirector@plso.org.

Editorial matters & contributions of material

The Oregon Surveyor welcomes your articles, comments and photos for publication. PLSO assumes no responsibility for statements expressed in this publication. Editorial matters should be directed to Greg Crites, gac@deainc.com.

Advertising policy Advertising content and materials are subject to approval of the PLSO Board and LLM Publications, Inc. The publisher reserves the right to reject any advertising that simulates copy; material must be clearly marked as "Advertisement."

For advertising, contact: Dan Hartzog, danh@llm.com; 503-445-2229, 800-647-1511 x2229. Send display ads to ads@llm.com. For submission guidelines, email ads@llm.com.



It's that time again!

■ Greg Crites, PLS

As the editor of this magazine, I could use this space to vent about all the things that you, as a member of the PLSO, should be doing for the organization but aren't, but guilt never seems to be an appropriate motivator. Suffice it to say, our 2015 conference is just around the corner and as a PLSO member, you should feel suitably remorseful if you're not planning on attending simply because you don't think the program is unique enough to warrant your attendance. Sadly, maybe you're considering attending a conference in another state where you hold a license because their program is more interesting. I propose an alternative.

If you hold professional licensure in more states than just Oregon, but Oregon was the *FIRST* state to grant you a license, then make the PLSO conference your *FIRST* choice for 2015! Then, since your affiliations and networks arose due to your licensure in Oregon and membership in the PLSO, and those connections have contributed to your professional success, take a small part of all that money you've made and attend a second state conference! You don't even need to hold a license in that state to attend their convention!

Why do I propose this unusual path to securing much needed CEUs and other, more intangible benefits? There are several reasons, and yes, I'm going to name a few of them.

First, a number of your peers are working tirelessly on the PLSO conference committee, investing personal time and creativity to put

together a program that meets most of the needs of the professional community in which they (and you) practice. The measure of their success is, simply put, numbers, because, let's face it, a major portion of the operating revenue of the PLSO during any fiscal year depends on conference attendance.

Second, quite a few of our conference speakers offer course material that, in my estimation, is very worthwhile for polishing your skills. Skills which, can you believe it, may not be quite as "finished" as you may think! Speaking for myself, I have one hell of a time with apostrophes! My wife reminds me of that fact regularly. I'm not sure how many times I need the rules spelled out for me, but I haven't arrived at an enlightened state yet. You might also consider using one of the vendors as a training tool for some of the new instrumentation. They'd be happy to walk you through a demonstration. I could use some of that, and I've been practicing for over 40 years!

Third, you need to network! Professional peers can be your most valuable resource when practicing outside your area of expertise. If you tell me you *never* do that, you're not being honest. During my years serving as a WFPS representative for the PLSO, I cemented many professional connections with folks on a national scale that I would otherwise never have made. I have a friend in another state that I can turn to with complicated questions regarding sectionalized lands. I know I'll get a "considered" answer or a recommendation of a peer who would possess the needed expertise. I can call Curt Sumner on his cell phone while he's on the Beltway heading to some committee hearing in DC to find out firsthand what he knows about the latest issues surrounding railroad abandonment,

for example. You don't make connections like that sitting at home!

By the way, I hold a license in Arizona and I haven't practiced there in nearly 10 years. Unless the client or circumstances absolutely demand that the work is uniquely suited for me and me alone (and how likely is that?), I will tap into my professional network to make a recommendation for a local surveyor who will offer a cost-effective solution for a potential client and allow me to dodge the bullet of liability that may arise by offering my services that are, at the very least, rusty.

If you are considering fulfilling PDHs, CEUs or other career objectives, please make the 2015 PLSO Conference your first choice. All of us benefit by your attendance. Don't forget to participate in the Education and Outreach Auction on Thursday night. It is always a worthwhile event and every dime of the proceeds helps our profession.

On a more "editorial" note, I want to thank Bob Taylor for further contributions to his "chronicles." He is inspiring me to write a few myself and, from the feedback I've received, there are others who would like a shot at sharing their stories. I, along with my editorial committee, welcome any contributions you wish to see in print.

Please read about what Tim Kent has been up to with his students at Clark College and the current goings-on at OIT—Wilsonville!

Lastly, I want to thank all the folks at LLM Publications for putting together such a great magazine—most especially Lisa Switalla. She is the glue that binds this entire effort together. ♦

The views expressed herein are mine and mine alone and in no way should be construed as representing ANY opinions shared by our membership or a stance on political issues by this organization.

Reviewing Chicken Scratches on Unofficial Returns

■ Darrell W. Fuller, PLSO Lobbyist

“It was a dark and stormy night” and when all the ballots are counted, the numbers will have changed little in the Oregon Legislature. All 60 House seats were up for re-election while 16 of the 30 Senate seats were on the ballot (76 total legislative races). Let’s look at the numbers.

After the 2012 election, the Oregon Senate had 16 Democrats and 14 Republicans and the Oregon House of Representatives had 34 Democrats and 26 Republicans. After this year’s election, the Oregon Senate will have 17 Democrats and 13 Republicans* and the Oregon House will have 35 Democrats and 25 Republicans.

Millions and millions of dollars—much of it from out-of-state billionaires—were spent on these 76 Legislative races, all for a net partisan shift of only one seat in the State Senate and one seat in the State House. And out of 61 incumbents running for re-election, 59 won.

Of the 16 State Senate races, 15 had an incumbent running and 14 of those 15 incumbents won. The only incumbent to lose was State Sen. Betsy Close (R-Albany). This race is why Democrats gained one seat in the Senate.

Only one of the State House incumbents lost. State Rep. Jim Thompson (R-Dallas) lost in the May Primary to a more conservative Republican. Of the 60 House members, 46 campaigned for re-election and 45 won.

While a partisan shift of +1 Democrat in the Senate may seem insignificant, next year’s Legislative Session will likely demonstrate how important a one-seat shift can be in politics. With last session’s razor thin 16–14 Democratic majority in the Senate, conservative-leaning Democratic State Sen. Betsy Johnson (D-Scappoose) sometimes sided with the GOP on controversial bills, creating a 15-15 tie. (Controversial? Think gun control, for example.)

Those controversial bills never made it to the Governor’s desk. Now, with a 17–13 Democratic majority, even if Sen. Johnson continues to vote with the GOP on controversial issues, they will pass 16–14, assuming Senate Republicans can’t convince another Democrat to cross party lines.

Across the nation, Republicans had a big night on election day. The GOP took control of the U.S. Senate and substantially increased their majority in the U.S. House of Representatives. Oregon was an outlier. Democrats will continue to control the Office of Governor, the state Senate and the state House of Representatives.

Aspirin, anyone? ♦

**The State Senate numbers assume State Sen. Bruce Starr (R-Hillsboro) wins re-election. As I write this, he has a 123 vote lead out of more than 30,000 votes counted with thousands still to count. (Moral to this story: Yes, every vote does count.) If State Sen. Starr loses, the Democratic majority will be 18–12.*

EXHIBITORS

Join us at the
**2015 PLSO
Conference**

January 23–25, 2015
Salem Convention Center

Register online at
www.plso.org.

Booth space is limited so register early!

So you think you can Crew Chief

■ Andrew Miller, PLS

“Can you dip those few manholes I pointed out while I finish shooting the road?”

“Sure thing.”

20 minutes later...

“You done dipping the manholes?”

“Yep.”

“We’re ready to roll then. Can I have your notes?”

“Oh, you wanted me to write the numbers down?”

“You’re kidding, right?”

“It’s alright. I think I can remember them.” ♦



CAPTURE EVERYTHING NOW, MEASURE LATER.

Tired of going back to the field to gather missed data? Then, you need the Trimble® V10 Imaging Rover.

Extending Trimble VISION™ technology further, the all-new Trimble V10 is an integrated system that captures 360-degree digital panoramas for precise measurement of the surrounding environment. Work faster in the field and avoid rework. With the V10, you are sure to leave the site with everything you need.

Whether your need is for project planning, inspections or investigation, this radical new solution provides previously unavailable data that will make your job more efficient, no matter what industry you're working in.

Together with Trimble Access™ field software and Trimble Business Center office software, the Trimble V10 is a professional solution that fits surveying workflows.

See it yourself at Trimble.com/V10



HEADQUARTERS
13218 NE 20th Street #400
Bellevue, WA 98005
800.523.6408 Phone
www.geoline.com

SERVICE CENTER
7800 SW Durham Road #100
Tigard, OR 97224
800.444.5814 Phone



Authorized Distribution Partner

ADDITIONAL OFFICES
Spokane, WA & Boise, ID

Six reasons why you and your employees should attend the PLSO Conference this January



■ Aimee McAuliffe, PLSO Executive Secretary

As we leave an incredibly busy work season and head into the holidays, be sure to save the date for the upcoming Annual Conference. Scheduled for January 21–23 at the Salem Conference Center, this event promises to provide inspiration, knowledge and fun while giving you a reboot for 2015.

It's commonly understood that ownership or upper management will take time to attend. It is vital for leadership to be aware of political changes, new technology and more. However, associate level employees should not be overlooked. This is why I particularly like the theme our Conference Committee chose this year, "Traverse to the Future." Forecasting is a difficult thing to do when your professional success is contingent upon so many moving parts. The future is never a straight road and is played like a *Choose Your Own Adventure* book. However, investing in your company and employee's future is always a good bet.

Listed (*right*) are six reasons why it's important to attend the PLSO Annual Conference.

Now that you know why you need to attend, keep an eye out for registration information for the PLSO Annual Conference. We want you to be a part of the future—yours and ours. ♦

- 1 **Learn**
No matter how many years of experience you have under your belt, everyone has something new to learn. Aside from the obvious benefits of obtaining required professional development hours, taking advantage of educational opportunities gives you a new perspective. Take time to evaluate the schedule and strategically plan which employees will attend which session for maximum benefit to your company.
- 2 **Network**
Learning doesn't only happen during seminar sessions. Meeting industry colleagues gives you a chance to learn which current productivity strategies are working for them. Despite the popularity of online sharing, there is something powerful in meeting face-to-face. Important decisions and ideas often start from a simple conversation initiated over lunch. Learning from each other may increase competition in the field, but it makes our profession better. It is also a good opportunity to meet new suppliers and vendors and see what equipment is new to the market. Did I forget to mention networking?
- 3 **Visibility**
Being visible at industry events positions you and your company as an expert.
- 4 **Regain focus**
After a busy summer schedule and holiday season, the PLSO Conference in January is the perfect time for employees to regain focus for the upcoming year.
- 5 **Support the future of your profession**
The higher up the professional ladder you climb, the more likely it is you need to hire staff. How are you going to hire local, qualified professionals if we're not cultivating professional education and outreach for our new graduates? Support the Education and Outreach Auction by donating items for bid and showing up for a fun night of good food and conversation during the silent and live auctions. The person you help send to college may be your future superstar intern or staff member.
- 6 **Share**
After learning new information and perspectives, having fun connecting with professional colleagues, and regaining focus on careers—it will be easy to spread this knowledge and inspiration throughout your company. Worth every penny! ♦

PROFESSIONAL LAND SURVEYORS OF OREGON Presents

TRAVERSE TO THE FUTURE

THE 2015 PLSO ANNUAL CONFERENCE
AT THE SALEM CONVENTION CENTER

 PLSO 2015

January
21-23
2015



REGISTER ONLINE WWW.PLSO.ORG

PLSO CONFERENCE 2015

SALEM CONVENTION CENTER
200 COMMERCIAL ST. SE, SALEM, OREGON

JOIN US IN 2015!

PLSO Conference 2015

■ *Jered McGrath, PLS, PLSO Conference Chair*

The leaves are changing, the fall is gearing up and hopefully you and your firm had a bustling summer with a revived workload better than years past. As I sit and watch the seasons literally switch overnight from extended summer to instant fall, I hear the rain and realize those locates that just got called in this week may need to be refreshed. Maybe now the weather people can officially look outside, see the Pacific Northwest's liquid charm and predict with certainty that a "chance of showers" will continue for the next seven months. Now is the time to switch gears, wrap up summer projects and think about continuing education and the investment you need to put back into yourself and/or your employees.

This year's conference is coming together nicely. We are returning to Salem before finalizing our 2016 conference location. Aimee, our wonderful new executive secretary has put together an RFP for conference venues to get bids from locations throughout the state. Some committee members have done great leg work to research locations and get first-hand accounts of venues, their operations and compatibility for our group. Two of the venues we have looked at are Chinook Winds Casino and Conference Center and Seven Feathers Casino Resort. Venues that will accommodate a group of our size are few and far between, but we would like to continue to compare relevant information about state venues to provide a conference host location you have all come to enjoy—like the Salem Conference Center.

The conference committee has been researching and discussing speakers, topics and various presentations for this year's conference in a working, fluid schedule. These speakers are contacted from suggestions in the post-conference surveys and various industry-related topics and technologies that are trending to the forefront. Over the rest of October, each member of the conference committee is reviewing the speakers contacted and their class offerings to reach a coordinated schedule of events. This schedule will continue to be altered and modified to account for changing speaker requirements and to align with our continued goal of providing a variety of interesting class offerings for attendees. When the schedule is ready to be published it will be pushed out on the website and through the PLSO newsletter and email blasts.

One of PLSO's continued goals is to reach out to the next generation of associate surveyors and future industry professionals to provide career information, training and mentorship along the path to professional registration. We hope to continue this goal for associates by reducing the associate member conference cost and providing a track of classes that will appeal to the associate member. Generally we want to hold these classes on Friday, but many associates may find relevant classes throughout the conference. Please look around your firm or community for associate members that would benefit from attending the conference. We hope this investment into associates will bolster your firm's educational goals and provide for a more educated workforce moving forward in these changing times.

One small change we would like to reintroduce this year is a short plenary on Wednesday morning that brings members together and welcomes attendees to the conference. Conference classes will begin immediately after the introduction. We also plan on continuing last year's prime rib dinner for the Thursday night auction. Plan to stick around for this great opportunity to bid on donated auction items. The revenue from the auction strengthens PLSO's scholarship fund and outreach programs.

Our conference registration this year will be handled by a combination of the board office and Action Registration. Action Registration assisted with previous year's registrations and the conference committee is looking forward to working with them this year. Registration will be online soon and we will continue with the cost savings for early bird registrations. One of the biggest planning tools afforded to us is the early attendance counts that assist us in coordinating the food numbers, hotel block reservations and general peace of mind that early numbers can bring.

Once again, I hope to welcome all of you to another great Professional Land Surveyors of Oregon Conference. ♦

TRAVERSE 
 **TO THE FUTURE**

JOIN US IN 2015!

Speakers and Seminars

■ **Jered McGrath, PLS, PLSO Conference Chair**

We are in the midst of booking our knowledgeable speakers and seminars for the conference. Final course listings and schedules will be available onsite. Here are a few of the speakers and a brief explanation of the courses we have on tap for attendees:



Mark Armstrong, PLS, Oregon Advisor—National Geodetic Survey, ODOT Geometronics Unit
TOPIC: NGS Updates

Bill Clark, Google Earth Consultant and owner of Earth Point
TOPIC: Google Earth Tips & Shortcuts

Gerry Clark, Water Rights Specialist, Oregon Water Resources Department
TOPIC: WRE

Michael Dennis, PLS, President and owner of Geodetic Analysis, LLC, president of the American Association for Geodetic Surveying (AAGS) and chair of the AAGS Geodetic Education and Certification Committee
TOPIC: OCRS-low distortion projections

Scott Fein, PLS
Jackson County Surveyor, Licensed Certified Water Rights Examiner (CWRE), Certified Federal Surveyor (CFEDS)
TOPIC: Narratives

Darrell Fuller, PLSO lobbyist

Evelyn Kalb, PLS and Rick Tieper, PLS
Evelyn Kalb is the Supervisory Land Surveyor, Bonneville Power Administration
Rick Tieper, Bonneville Power Administration
TOPIC: 75 Years of Survey Records Explained in 90 Minutes

Craig Hamelund, Safety Education, Oregon OSHA

Mark Hawkins, PLS
Engineering Survey Manager—Transportation, City of Portland
Topic: State of PDX Survey

Kyle Hensley, PLS, Supervisory Land Surveyor, Cadastral Survey Section 1 Chief, BLM

David Hills, PLS, Regional Land Surveyor, Region 1, U.S. Fish and Wildlife Service
TOPIC: Update on U.S. Fish and Wildlife Service programs

Mary Johnson, Attorney

Jeff Lucas, PLS, Attorney, surveyor, author of “The Pincushion Effect” and “Traversing the Law” in *Point of Beginning* magazine

Mike Olsen, Assistant Professor of Geomatics, OSU School of Civil and Construction Engineering
TOPIC: LiDAR, earthquake damage surveys, other topics

OIT Professors (various)
TOPIC: Associate member prep classes

OSBEELS Board Members
TOPIC: OSBEELS General update

Michael Pallamary, Surveyor, speaker, author of “Reversionary Rights” and “Ethics and Standard of Care” in *American Surveyor* magazine

Mike Swanson, Boundary Program Manager, U.S. Forest Service.
TOPIC: USFS general update.

Charlie Tucker,
Railroad Services Manager, Farnsworth Group, Inc.
TOPIC: Railroad Surveying 101

Dave Woolley, PLS, Surveyor and current president of the CLSA—Oregon County. Speaker at 2011 PLSO Conference, presenting “Land Surveyor Liability, Standard of Care and Ethics.” Author of “Corruption in Land Surveying—Temporary Corners” and “Land Surveyor Liability.”

David Yewman, Strategic communications expert and owner of DASH Consulting, Inc. Co-author of “Weekend Language: Presenting with More Stories and Less PowerPoint.” ♦

TRAVERSE 
 **TO THE FUTURE**

REGISTER ONLINE **WWW.PLSO.ORG**

Recognize our members!

Submit your 2015 PLSO Award nominations

January will be here before we know it, and we will be reuniting with our colleagues and friends at the Annual Conference in Salem and enjoying all the programs at the event. It is time to think about nominations for the Awards Banquet.

Surveyor of the Year (SOY) and **Life Member** are the only awards subject to the bylaws, so let's start there.

The SOY nomination process is covered in Article 15 (1):

- Nominations need to be presented to the Board at the meeting prior to the annual meeting. That meeting is to be announced, but will take place in October.
- Nominations must be written, endorsed by five PLSO members in good standing and they must contain a bio, resume, photo and reason(s) for the nomination.
- Minimum requirements for SOY
 - Corporate member of PLSO for five or more years.
 - Demonstrated history of high competence, integrity, and professionalism.
 - Assisted qualified and interested people in advancement within the profession.
 - Career long service to the profession.

The Life Member nomination process is covered in Article 3 (3):

- Approved by vote of the Board and awarded at the Annual Meeting.
- Life Members retain Corporate membership status.
- Nominations shall be presented to the Board and shall include a record and bio.
- Minimum requirements for Life Membership:
 - Career long service to the profession and to PLSO.
 - Served as Chapter President.
 - Corporate membership is current and extends back 10 years prior to nomination.
 - Approved by vote of $\frac{2}{3}$ of the board by secret ballot.

Awards have been scarce the last few years. Let's have some fun with it and give out lots of awards in 2015. Our Awards chair is John Thatcher, and he will be happy to assist you or answer any questions about awards. Email him at jthatch1@ch2m.com.

For the other awards, look on the PLSO website at www.plso.org for the nomination documents. Click on the Members link, login, then the "Membership Resources E Binder" link in the left vertical ribbon. That will bring up the section on awards. **This is the fun stuff.** Each chapter can nominate chapter members for the following awards:

Article of the Year

Outstanding Associate
or Special Member

Good Humor Award

Brush Cutter Award

Team Player Award

Bright Idea Award

Contagious Attitude
Award

Diversity Award

Hidden Talent
Award

Community
Service Award



JOIN US IN 2015!

SEE AUCTION FORM ON PAGE 15

PLSO Education and Outreach Auction

■ Gary Johnston, PLSO Auction Chair

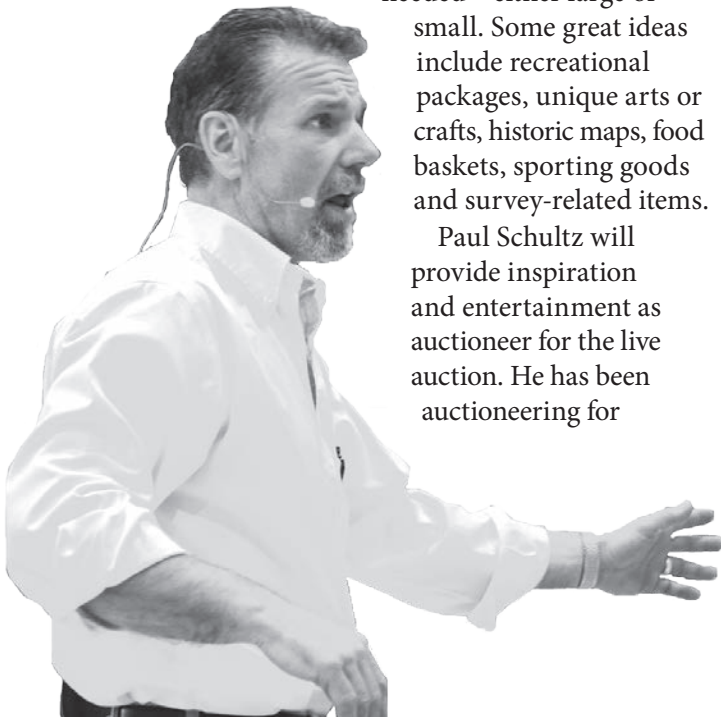
The PLSO Education and Outreach Auction promises to be an entertaining and rewarding event during the 2015 conference. The evening will begin with a social hour accompanied by silent auction bidding, followed by a delicious prime rib dinner (included with conference registration), and conclude with the live auction. The success of both the silent and live auctions depends upon the unique collection of items donated and the enthusiastic participation of attendees.

A copy of the auction donation form is included with this issue. This document will also be available on the PLSO website at www.plso.org. Completed donation forms should be sent to the PLSO office prior to the conference. As an incentive for early registration, people who register donations by December 31, will be eligible to win one of three prizes in a drawing.

Several donations have already been received or pledged. Also, the right to display the Buff and Buff transit for one year, and the always mysterious “Bag-o-Cash” will be available at the live auction. Many more items are still

needed—either large or small. Some great ideas include recreational packages, unique arts or crafts, historic maps, food baskets, sporting goods and survey-related items.

Paul Schultz will provide inspiration and entertainment as auctioneer for the live auction. He has been auctioneering for



25 years raising funds for a wide variety of organizations. He enjoys working with any group that has the passion to raise funds for their cause. Whether he is selling pies for a church mission effort or fighter jet rides to support the Juvenile Diabetes Foundation, it is his desire to “extract funds from nice people for worthy causes.” He conducts approximately 35–40 auctions per year working for Stokes Auction Group of Tacoma in support of organizations like March of Dimes, the Humane Society, JDRF, Hospice of Redmond, and The Liberty House, as well as a large group of schools and many other humanitarian causes. Paul notes that while the success of an auction is often gauged by the dollars raised, it is equally important to allow everyone to participate at a level that fits their budget and interest. PLSO is fortunate to have Paul serve as auctioneer again.

This year’s auction proceeds will be distributed to the scholarship fund and to outreach programs. The exact allocation will be determined by the PLSO Board. An option that would allow donors to designate proceeds for either the scholarship fund or outreach programs will be considered this fall.

Please make it a priority to make one or more donations, then join the fun and support education and outreach by being a successful bidder January 22. See you in Salem for the conference! ♦



TRAVERSE 
 **TO THE FUTURE**



Annual MAP CONTEST

January 21–23, 2015

Salem Convention Center
Salem, Oregon

Come One, Come All!

**Submit your maps
for a friendly contest!**

Each year PLSO holds a map contest at its Annual Conference. Show us your skills in Salem this January for a friendly competition among surveyors. All entries will be displayed at the 2015 Conference. Winners will receive bragging rights and prizes as follows:

Prizes awarded to the top three (3) entries in each contest.

Last year's winner(s) not eligible

- FIRST PRIZE One FULL admission to the 2016 Annual PLSO Conference
- SECOND PRIZE \$200 gift card • THIRD PRIZE \$100 gift card

Contest Guidelines

Types of maps that may be submitted

- Record of surveys
- ALTA
- Exhibit
- 3D Models
- Subdivision & condominium
- Topographic
- Public Land plat

Submissions

Please submit one rolled paper copy.

- Maximum size 24" x 36".
- No identifying name, stamp or firm name to be included on the map.
- Title and Narrative must be included (noted for out of state entries).

All entries will not be returned.

Limit: Three maps (four-sheet max) per firm.

How to enter

Maps must be received by **5 pm, Friday, January 16, 2015.**

Complete the entry form below and mail it with your map(s) to:

PLSO Survey Map Contest, PO Box 230548, Tigard, OR 97281

CONTACT NAME	
COMPANY	
STREET ADDRESS	
CITY, STATE, ZIP	
PHONE	EMAIL

Cadastral tales

■ *Bob Taylor, PLS*

#14 Toxicodendron

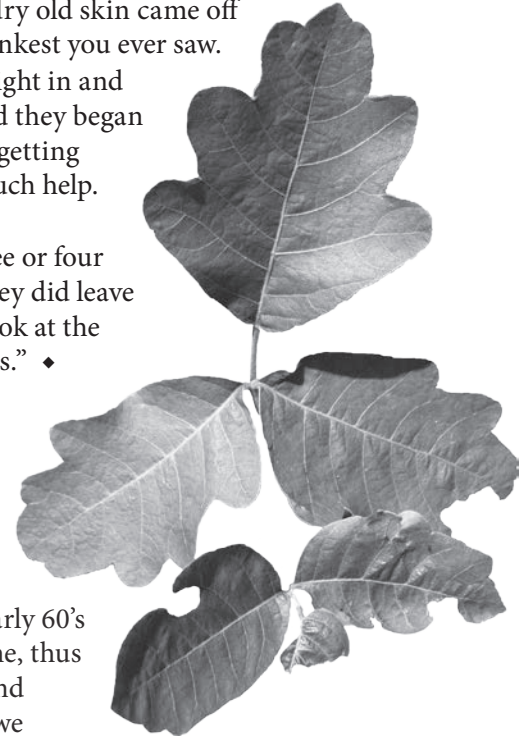
GROWING UP IN EASTERN OREGON, I never ran across poison oak (toxicodendron), so when we came to Brookings and came across the “deadly weed,” many workers said, “no way, not me.” Well, I had no fear of the shiny stuff so I jumped in with a machete and cut away. Those that knew the danger told me to shower with cold water and Fels-Naptha soap, which I did, and for the next month I was in great demand.



Then a three day weekend came along and nearly everyone went to Portland. Since I knew no one in Portland, I stayed in Brookings. On a bright, sunny Saturday, I took a blanket and two beers to the beach, I covered myself with suntan lotion and about 2:00 PM I rolled over on my stomach and fell asleep, until about 4:00 PM. When I woke up, I slowly began to realize I had a heck-of-a sunburn on the back of my legs. Within a few days, the dry old skin came off and the back of my legs were the pinkest you ever saw.

Well, sure enough, a week or so later we ran into poison oak and I jumped right in and cut away. NO FEAR! Two days later, the reaction to poison oak hit my legs and they began to weep like a baby. The doctor in town said he could have helped me prevent getting poison oak so bad but by now it was too late. So I got calamine lotion...not much help. The next morning the back of my legs had cracked and started to bleed.

The guys brought me a five gallon tub and filled it with ice. Armed with three or four cubes, I iced my legs down every half hour. The guys had to go to work, but they did leave me a bottle of Cutty Sark which kicked in about noon. To this day, I cannot look at the Toxicodendron plant without starting to scratch or order a “Cutty on the rocks.” ♦



#15 Yuma

THE WORKING SEASON IN THE NORTHWEST AREA OF BLM in the early 60's was from April to about Thanksgiving. That was for the “temp” workers like me, thus each winter the “temps” would look for work. Most would find a regular job and move on, and many we never saw again. A few of us really liked surveying so we would look to private practice to get us through.

In 1962, I got a temp job with the BLM out of the Sacramento office and I picked up a Suburban and a 40 foot trailer and headed for Yuma, Arizona. I got as far as Beatty, Nevada. (Sometime I will tell you how to make an Atomic Martini.) Early the next morning I headed south back into California through Death Valley and about 20 miles north of Baker, CA, I came to a very long and gentle slope to the highway. It was a beautiful morning, and I didn't have a care in the world, so I just backed off the gas and let it coast. All of a sudden, I heard a siren and I pulled over to let a state trooper go by, but to my surprise he pulled in behind me and gave me a ticket for speeding—by going 55 mph. Apparently, trailers in California could only go 45 mph. He told me I should send the \$30 to the judge in Baker with a letter and I might get lucky. The judge sent me back \$15.

Once I got to Yuma, I met the other five crew members and the party chief, Elliot Prescott (hope my memory is right). Our daily routine consisted of crossing the Colorado River every morning into the Yuma desert. Our first job was in the sand dunes. This was a true desert. Part open flat rocky soil with cacti, some flat with highly polished stones that were pure black, and the big dunes.

To set a corner in the dunes we would pack the following items into the corner: two $\frac{3}{4}$ -inch by 10-foot long steel “rebars” and the standard BLM 30-inch long by two-inch galvanized pipe with a brass cap. Also a shovel and a “beater-bar.” Once the point was determined we would reference the position and scoop out as much sand as we could. The hole was about $2\frac{1}{2}$ feet deep before the sand started to slough back in the hole. We then set one of the long “rebar” rods in the corner position and left about four feet above the sand, then we dropped the BLM pipe over it. We then set the second long rod next to the pipe and left about six feet above the sand. We placed a couple of strap clamps around the rods and pipe and then backfilled the hole. That should have let the shifting sand move up and down with time. I never found out how well it worked. I supposed I could call Sacramento and find out!

The second neat job was on the black flat desert. The heat waves made the earth disappear at about $1\frac{1}{2}$ miles around 8:00 AM. On our first day out, we set over a township corner and, after Elliot determined our bearing, began to measure with a 10-chain tape along the line. Four pulls took us to the first $\frac{1}{4}$ corner. The original surveyors had marked the corners by making a four foot square. The outer edge was a four-inch wide trench, and the black pebbles were placed into the center of the square. After a few wind storms (which were often) it left a white sand square and a mound of black rock in the center. It looked really cool.

We made all six miles that day. It went well until we entered an area that had been used by Gen. Patton to train troops. There were camp fire pits all over. We had to check for charcoal at every potential corner.

So much to tell, so little time. ♦



A Workshop for Surveyors and GIS Professionals

Sponsored by Oregon GPS User's Group

Tutorial on the use of the UNAVCO software **TEQC** and US Army Corps of Engineers software **WinTEQC** and Proposed new **GNSS Surveying Standards**

TEQC and WinTEQC, *presented by Lou Estey and Mark Huber*

TEQC was developed by UNAVCO to edit and manipulate GNSS data files that often must be translated to RINEX, edited to decimate the collected interval, delete unwanted satellites; trim off data at the beginning or end of the occupation, etc., as well as performing some quality control tests on the collected observations. It is a command line driven application in which the user supplies the various parameters to tell TEQC what needs to be done.

WinTEQC is a MS-Windows-based program which simply provides a user-friendly interface that prompts the user for input and passes that to TEQC for processing. WinTEQC also has various tools for working with OPUS output from NGS.

New GNSS Surveying Standards, *presented by Gregg Helmer*

One aspect held in trust by the survey profession is the authority to certify as to the accuracy of geodetic control networks. The California Land Surveyors Association and California Spatial Reference Center commissioned the drafting of statewide standards and specifications for GNSS geodetic control surveying jointly published in 2015. This workshop session introduces the salient points and guiding principles for professional practice of GNSS geodetic control as agreed upon by the taskforce, together with disruptive technologies and modernized geodetic datum.

When **Thursday, April 9, 2015, 7:30 AM – 4:30 PM**

Where **NW Eola Viticulture Center, Chemeketa Community College, 215 Doaks Ferry Rd., Salem, OR 97304**

Cost **\$75 (Yes, tasty lunch provided)**

Check-in **7:30–8:30 am (Preregistration only—No registration at the door)**

PDHs **7**

First come, first served, for up to 150 registrants.

Attendees will be emailed any handout materials a few weeks before the workshop and should be self-printed prior to your attendance. No materials will be provided at the workshop.

Questions: John Minor at johnminor@stuntzner.com or Pat Barott at sbarott@charter.net

Send one registration per person to: Pat Barott, 1446 St. Andrew Way, Medford, OR 97504

Make checks payable to: Oregon GPS Users Group

OGUG tax ID# 93-1282014

Name _____

Address _____

City, State, Zip _____

Phone _____ Email _____

Lost Surveyor Solution on page 17

■ Pat Gaylord, PLS

Question: Located just a few blocks from two stops on the Bend Ale Trail, this benchmark set in 1920 is located in the wall of a building built the same year in downtown Bend, Oregon. Can you guess the location?



PLSO Education and Outreach Auction — CONTRIBUTION FORM

Please return this form and send items (if not attending conference) to: PLSO, PO Box 230548, Tigard, OR 97281

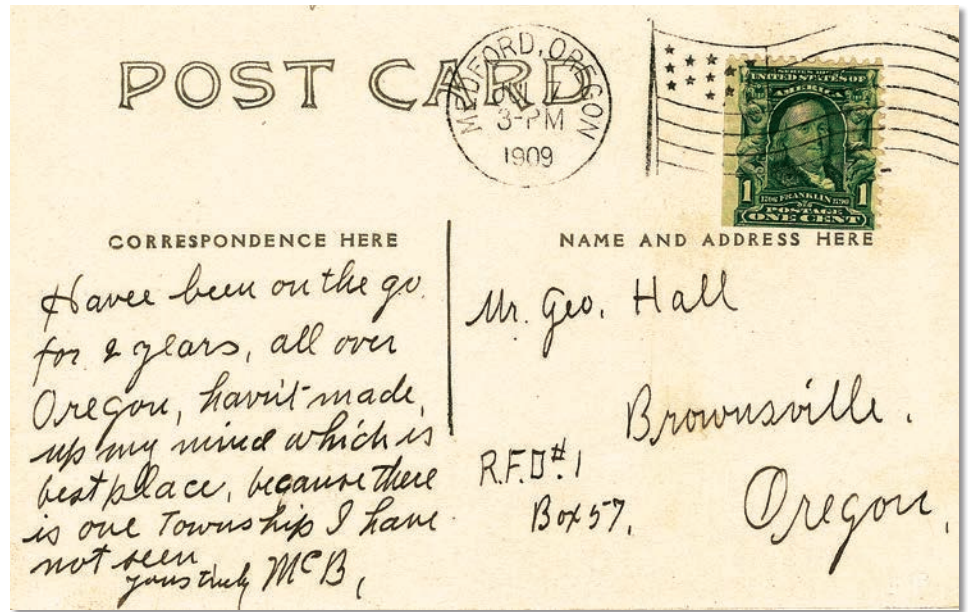
DONOR/BUSINESS NAME	
CONTACT NAME	
STREET ADDRESS	
CITY, STATE, ZIP	
PHONE	EMAIL
DONATION ITEM	
DESCRIPTION	
FAIR MARKET VALUE	BIDDING RESTRICTIONS (if any)

Oregon historian needs your help

■ Paul Galli, PLSO Historian

We received an inquiry from Ben Truwe, a historian from the Medford area. Ben found a 1909 postcard from a “McB” to George Hall, who was then-president of the Pacific States Telephone and Telegraph Company. At the time, the company was in the midst of a major expansion and the text jocularly mentions that the author has been in every Township in Oregon but one.

The privately shot postcard shows a man posing on a stream bank in new clothes and boots, holding a surveyor’s



compass, with its case slung over his shoulder. From his dress and compass, it would appear that he was an engineer or land surveyor. His reference to “Township” in the text points to a possible understanding of the USPLSS.

If anyone knows his name (perhaps you’ve retraced a McB somewhere around the state), or any other information about him, please contact Ben at truwe@mind.net and let him know. He has already searched many Oregon newspaper sites—opening the OCR source for each page and searching the “mcb” root—and contacted the Jackson County surveyor, without success.

By the way, check out Ben’s website (address below). He has a ton of interesting southern Oregon history, including a few things regarding surveying.

Thank you for your help. ♦



Close up of compass in photo

Ben’s website: Southern Oregon History, Revised
<http://id.mind.net/~truwe/tina/s.o.history.html>

Interesting topics:

Chaining

<http://id.mind.net/~truwe/tina/mosher.html>

James Sullivan Howard

<http://id.mind.net/~truwe/tina/howard.html>

Oregon student ranked 8th by National Trig-Star Committee

NSPS is pleased to announce the recipients of the 2014 Richard E. Lomax National Trig-Star Awards. The Trig-Star committee met on July 11, 2014, to determine the three top high school students from the national examinations submitted by the 37 state winners.

Richard E. Lomax National Trig-Star Awards (in place order)

Lubin Deng, *Colorado*
 Benjamin Fawcett, *North Carolina*
 Natalie Sanchez, *Washington*
 David Stackhouse, *Alaska*
 Stephen Joyce, *Minnesota*
 Russell Kenney, *Wyoming*
 Emily Parnell, *Virginia*
JOLYN CHANCE, OREGON
 Anna Keri, *Ohio*
 Crystal Nevius, *Georgia*
 Tyler Rosenberger, *Pennsylvania*
 Robert Ross, *Indiana*
 Taylor McCreary, *California*
 Kristopher Schaff, *Montana*
 Jessica Gustad, *Michigan*
 Jacob Zamora, *Utah*
 Shoshaunah Jacob, *Wisconsin*
 Sairahul Pentaparthi, *Texas*
 Cameron Fisk, *New Hampshire*
 Nathan DeGraaf, *Iowa*
 Eric Pitman, *Idaho*
 Alexander Snouffer, *Maryland*
 Alexander Bakker, *Massachusetts*
 James Johnson, *Kentucky*
 Anthony Abbazia, Jr., *Connecticut*
 Katie Kanich, *Delaware*
 Yun Wei Yang, *Nevada*
 Elijah Mathews, *North Dakota*
 Evangimel Miranda, *Puerto Rico*
 Su Yang, *New York*
 Mathias Wingert, *South Dakota*
 Rachel Douglass, *Louisiana*
 Isaac Swiney, *Illinois*
 Nicholas Tice, *Maine*
 Matthew Harrell, *Alabama*
 Elizabeth Goodrow, *Kansas*
 Zachary Wade, *Missouri*

Richard E. Lomax National Teaching Excellence Awards

1st place: Dorothy Dady, *Cherry Creek High School, Greenwood Village, Colorado*
 2nd place: Nicholas Corak, *New Hanover High School, Wilmington, North Carolina*
 3rd place: Carolyn Johnson, *Rochester High School, Rochester, Washington.* ♦

Lost Surveyor (from page 15)

Located just a few blocks from two stops on the Bend Ale Trail, this benchmark set in 1920 is located in the wall of a building built the same year in downtown Bend, Oregon. Can you guess the location?

Solution: This benchmark (I 23 1920) set in the south wall of 900 NW Wall Street is located in the core of downtown Bend. Check it out and enjoy some shopping, a beer or two and an event at the nearby Tower Theater. November is the Bend Ale Trail month.



Be outstanding in your field...

All NEW from Carlson

BRx5 GNSS Receiver

Both Powered With –

**Carlson
SurvCE**

Combined with SurvCE4.0, get highest positional accuracy, plus:

- 270-channel receiver
- Dual Bluetooth ports
- Dual hot-swap batteries
- OmniSTAR capable
- Each receiver can be configured as Base, Rover or Network Rover

And the world's most reliable data collector just got better...

Carlson Surveyor2

- Faster Processor
- Long-range Bluetooth
- Extended Battery Life
- Larger, Brighter Display Screen
- Easier To Use
- More Options
 - Integrated camera
 - 3G modem
 - GNSS receiver

For more information contact Jim Reinbold,
 jreinbold@carlsonsw.com • (303) 482-1836



Carlson
 ...For the Total Project

Surveying & Geomatics at Oregon Tech—Wilsonville

■ Timothy A. Kent, PLS



residents is the border county rule. This allows residents of Multnomah, Clackamas, and Washington counties to enroll at Clark College at the in-state tuition rate.

An additional factor is in the formative stages and that is the reestablishment of the surveying

In 2002, a number of surveying professionals gathered on the OIT campus in Clackamas to discuss the feasibility of establishing the OIT surveying program in the Portland metro area. The group was introduced to building a course schedule, requirements for professors, and equipment acquisition amongst a myriad of other details. These efforts planted a seed that something needed to occur for teaching the surveying profession in the largest population area in Oregon.

Fast forward (actually it was a pretty slow acceptance process) to 2012 and the final plans were agreed upon for a portion of the OIT Surveying & Geomatics program to be offered in the Portland metro area. This plan was to establish the upper two years of the bachelor's degree program at Wilsonville. It duplicates what is currently taught in Klamath Falls, where only a bachelor's degree is offered. Readers may be unaware that the associate's degree at that location was discontinued in the 1990s.

Some factors that played into the final decision to offer the upper two years only was the establishment of an AAS Degree in Surveying at Clark College in Vancouver. This program started in 2007 and became fully transferable to OIT in 2012. The course content and credits mimic the first two years at Oregon Tech. The planning team recognized that the majority of interested students in surveying were already in the workforce and the best way to serve them was to offer classes during the evening with labs on the weekend. This has proven to be a very effective model for recruitment. A great enrollment benefit for Oregon

program at Chemeketa Community College in Salem. There are precious few two-year colleges offering surveying courses in Oregon, and it was felt to be in the best interest of the profession to try and revive the Chemeketa program and allow it to transfer directly to Oregon Tech at Wilsonville. This could serve a two-fold purpose by bolstering enrollment and strengthening the bachelor's degree program.

Enrollment at Oregon Tech—Wilsonville has been slow but beginning this year there has been an increase in transfer students from Clark College. It is expected to take about five years to channel a steady stream of transfer students into the Oregon Tech Wilsonville program.

A questionnaire that was recently completed in the northwest revealed that the majority of employers support some level of educational training at the college level. For the people in the Portland metro area, obtaining a quality surveying education is now a reality. If you are interested in further information on the programs at Clark College or Oregon Tech Wilsonville, please contact me. ♦

Oregon TECH

Timothy A. Kent, PLS
Surveying & Geomatics Program
Oregon Tech—Wilsonville
timothy.kent@oit.edu
Cell: 360-921-9233



Timothy A. Kent, PLS
Surveying & Geomatics Program
Clark College—Vancouver
tkent@clark.edu
Cell: 360-921-9233

Clark College Surveying & Geomatics Program

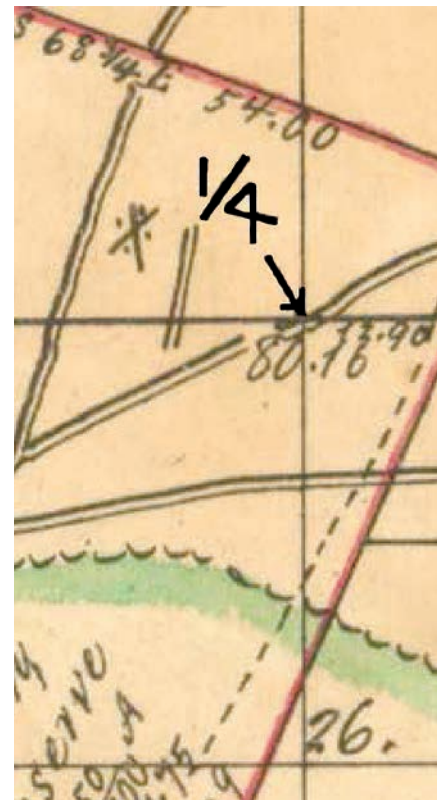
■ Timothy A. Kent, PLS

The Surveying & Geomatics program at Clark College recently received a donation of 15 surveying vests courtesy of PPI Group. Tigue Howe, the president and owner, and Paul Rydell, the survey sales manager, have supported surveying education for many years and the program at Clark College is indebted to them and grateful for their contributions.

Pictured below are the new students in the SURV 121 course, Field Survey I, for fall term. They are quickly being indoctrinated into the basics of surveying through a variety of topics from taping and note-taking to running level loops and total station work.

The students seated on the wall around the chime tower are about 30 feet from the original point for the $\frac{1}{4}$ corner between sections 23 and 26 in T. 2 N., R. 1 E. This corner was established in 1860 by Lewis Van Vleet. One of the accessories (bearing trees) he marked was a 72 inch diameter Douglas Fir tree. Also, Fourth Plain Boulevard crossed the section line just to the east of the chime tower. What was in place here so many years ago is a source of amazement for our students.

If you would like more information on the Surveying & Geomatics program at Clark College, please visit the website at www.clark.edu/academics/programs/surv/index.php or contact Tim Kent, the Program Coordinator at 360-992-2052 or tkent@clark.edu. ♦



PROFESSIONAL LISTINGS



HOFLAND SURVEY MONUMENTS


Pipe Monuments • Concrete Markers • Custom
Stainless • Aluminum • Brass • Iron • Copper

RICHARD HOFLAND
503.320.2685
hoflandsurvey@earthlink.net

P.O. BOX 515
145 W. MAIN STREET
YAMHILL, OR 97148

“Dual Frequency OPUS Receiver for \$1,880.00”

- Automates data preparation for OPUS
- One button operation in the field (on/off!)
- OPUS-Rapid Static position in 16 min
- Collect OPUS-Static position in 2 hours
- 2 year Warranty, Waterproof, Rugged
- Includes download, data prep tool



Resource Supply, LLC
11607 SW Winter Lake Drive
Tigard, OR 97223
Call Jon at 503-521-0888 today
www.resourcesupplyllc.com
Email: jon@resourcesupplyllc.com

Resource | Supply
| | LLC

**3D Laser Scanning and
Industrial Measurement Services**

Offering Comprehensive Survey Services for
Project Development and Construction

Proudly Supporting PLSO For 30 Years!



BEGIN WITH THE END IN MIND.
503.684.0652
westlakeconsultants.com

It's time to market
your business!

Advertise in the Oregon Surveyor

Contact Dan Hartzog at LLM Publications:
800-647-1511 x2229 • danh@llm.com

Join PLSO or Renew your Membership!



PLSO is the only organization that exclusively
represents the interests and serves the needs
of land surveyors, especially in Oregon.



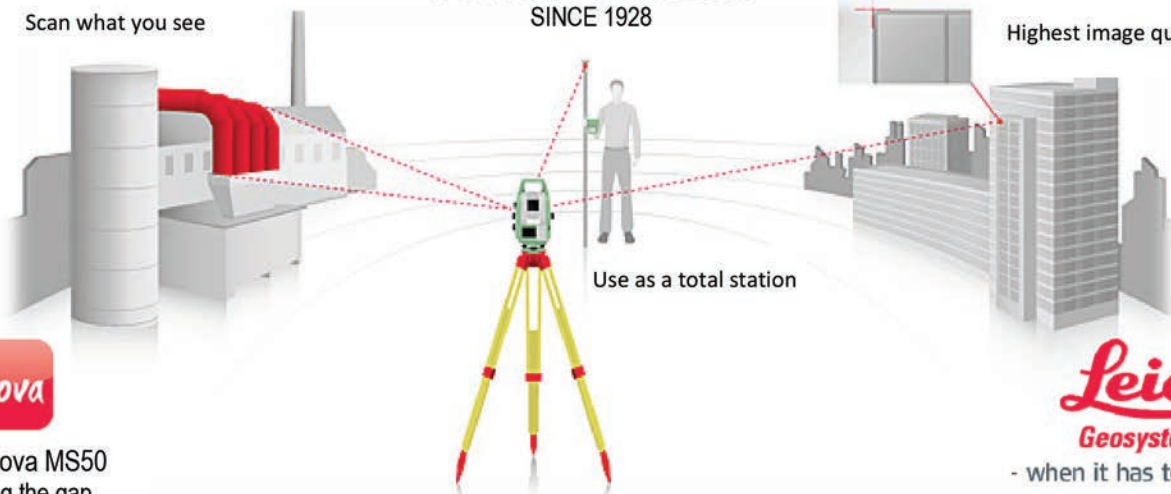
Go to our website at www.PLSO.org.



A TRADITION IN PRECISION
SINCE 1928

Scan what you see

Highest image quality



Use as a total station



Leica Nova MS50
Bridging the gap



- when it has to be right

KR. — Mountlake Terrace
6510 - 216th St. S.W., Suite E
Mountlake Terrace, WA. 98043
Toll Free: 1-800-454-1310

KR. — Fife
4905 Pacific Hwy E., Suite 1
Fife, WA. 98424
Toll Free: 1-888-562-3082

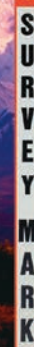
KR. — Portland
5400 Columbia Blvd., Suite A
Portland, OR. 97218
Toll Free: 1-800-472-7007

WWW.KRINC.NET

SURVEY

MARKING PRODUCTS

- SURVEY MARKERS & MONUMENTS
- CONCRETE MARKERS & DRILL BITS
- SURVEY NAILS & WASHERS
- REFLECTIVE TARGETS & PRISMS
- FLAGGING & WITNESS POSTS



REQUEST A CATALOG
877.686.8561



FIND US ONLINE
www.berntsen.com

Berntsen®

MARKING THE INFRASTRUCTURE OF THE WORLD™ | WWW.BERNTSEN.COM

The Oregon Surveyor
PO Box 230548
Tigard, OR 97281

PRSR STD
US POSTAGE
PAID
SALEM OR
PERMIT NO. 526

COLLABORATION

SOFTWARE
TECHNOLOGY

DESIGN
TRAINING

SUPPORT
CONSULTING
SOLUTIONS

BIM

ARCHITECTURE
PROJECT

ENGINEERING
INFRASTRUCTURE

WORKFLOW

PRODUCTIVITY

VISUALIZE

DATA MANAGEMENT

CUSTOMIZATION

CAD



PPI
GROUP

AUTOMATION
FIELD

EQUIPMENT
SURVEY

MACHINE CONTROL
SCANNING
CONSTRUCTION

ACCURACY
LASER
REPAIR
SUPPLIES

MAPPING/GIS
TOTAL
STATIONS

Pacific Northwest-based solution provider for the AEC industries. An Autodesk® Gold Partner, and authorized Topcon dealer with state-of-the-art training centers and high-end public showrooms.

(800) 247-1927

WWW.THEPPIGROUP.COM

 **TOPCON**

 **AUTODESK.**
Gold Partner

FROM THE GROUND UP